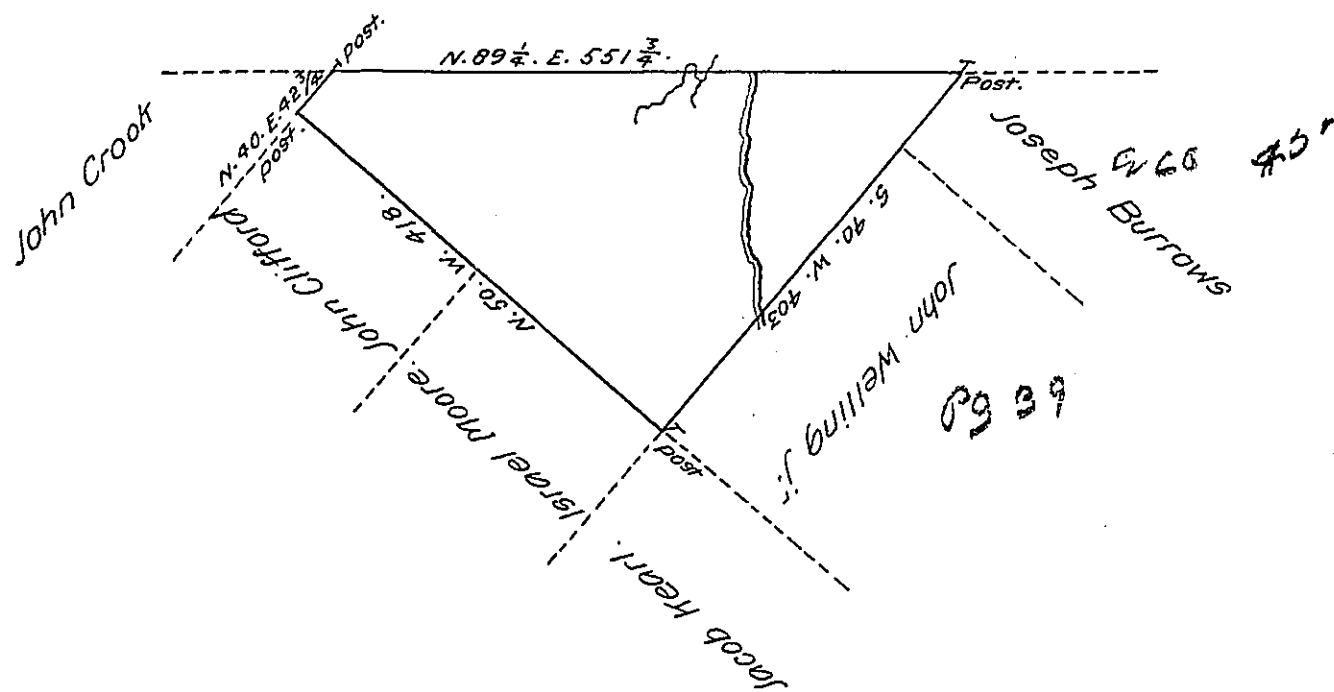


The Hon^{ble} the Proprietaries



By Virtue of a Warrant dated the 1-July 1784. Surveyed the 13th October 1784 to John Welling Sen^r the above Described tract of Land situate on a Northerly Branch of Middle Creek in Northampton County containing Five hundred and forty nine Acres a quarter and the Allowance of Six P. Cent &c^o

E. Geo. Palmer

To John Lutrens Esquire
Surveyor General.

IN TESTIMONY that the above is a copy of the original remaining on file in the Department of Internal Affairs of Pennsylvania, made conformably to an Act of Assembly approved the 16th day of February, 1833, I have hereunto set my Hand and caused the Seal of said Department to be affixed at Harrisburg, this twenty-fourth day of May 1907.

Henry Howard
Secretary of Internal Affairs.